

# SureLife<sup>®</sup>

## Ear Thermometer



## **Contents**

Cautions . . . . .	.2
Special Features. . . . .	.2
Measurement Principle . . . . .	.2
Indication for use . . . . .	.3
Product Description . . . . .	.3
Ear Measurement. . . . .	.3
Correct Measurement Method . . . . .	.4
When the Measurement Result is Abnormal. . . . .	.5
Memory Function . . . . .	.6
Replacing the Batteries . . . . .	.6
Cleaning and Care . . . . .	.7
Display Message . . . . .	.7
Product Specifications. . . . .	.8

Thank you for purchasing the SureLife® Ear Thermometer. Please read through this manual before using the product.

## Cautions

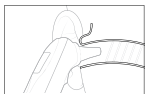
1. Do not drop or shock the unit.
2. Do not immerse the unit into water.
3. Keep the unit out of reach by children.
4. If the unit does not function, contact the dealer
5. Consult a doctor if the result of the measurement is out of normal body temperature range.
6. Do not disassemble the unit. Open the battery cover only when replacing batteries.
7. Dispose of used batteries according to local recycling regulation.
8. The product function may be reset when it is subjected to electrostatic discharge disturbance test. Just follow the instruction described in this manual to set the function again for normal operation.

## Special Features

1. Takes one second to measure temperature.
2. Use LCD to show the clinical data.
3. Stores 30 readings to track previous measurements.
4. Automatic shutoff

## Measurement Principle

Because the eardrum shares blood supply with hypothalamus which is the temperature control center in the brain, measuring the temperature of the eardrum with infrared thermometer can accurately reflect the body temperature.



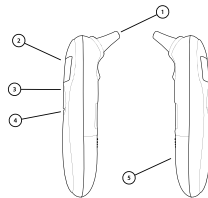
Normal body temperature range

Ear	Axillary	Oral	Rectal
96.4°F – 100.4°F	94.5°F – 99.1°F	95.9°F – 99.5°F	97.9°F – 100.4°F

## Indication for Use

The SureLife® Ear Thermometer is an electronic clinical thermometer using an infrared sensor to detect body temperature from the auditory canal in the neonatal, pediatric and adult population used in the home setting.

## Product Description



1. Probe
2. LCD Display
3. Measurement Button
4. Power/Memory Button
5. Battery Cover

## Ear Measurement

1. **Remove Cap and Press Power/Memory button.**

A beep will sound, your most recent measurement result will be displayed briefly. Three dashes indicates that the device is ready.

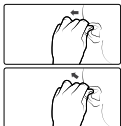


## 2. Start Measuring.

Pull ear smoothly to flatten ear canal. Insert the probe facing the eardrum in a straight line. Press the measurement button until you hear the beep signal.

How to pull the ear

- For children, gently pull ear straight back.
- For adults, gently pull ear up then back.



## 3. Measurement Result

When the measurement is complete, the temperature will be displayed on the LCD screen

## 4. Interval Between Measurements

If you need to take another measurement, allow an interval of 8 seconds until the “F” flashes. If you press the measurement button within 8 seconds, the beep signal will be sounded.

## 5. Turn off the thermometer

- Press the Power/Memory button until the “OFF” signal is displayed
- The thermometer will turn off automatically after 1 minute of inactivity

## Correct Measurement Method

1. Ensure the probe is facing eardrum in a straight line. Otherwise, the measured temperature will be lower than the actual body temperature.



2. For accurate results, clean the probe with a cotton ball before taking the measurement.

## When the Measurement Result is Abnormal

1. Possible causes for high temperature:
  - After exercise, meals and crying.
  - Prolonged exposure to high-temperature environments.
  - The thermometer is used immediately after being stored in a low temperature environment. Keep the thermometer in room temperature for at least 30 minutes before using.
2. Possible causes for low temperature:
  - The probe is dirty
  - The thermometer is pulled out from the ear before the measurement is complete.
  - The probe is not fitted snugly into the ear canal.
  - The thermometer is used immediately after being stored in a low temperature environment.
  - The probe is not facing the ear drum or is not placed in the correct position in the ear canal. See “Correct Measurement Method.”
  - The probe is blocked by excess ear wax.
3. Temperatures measured from left and right ears are different:
  - There could be slight difference in temperatures when temperatures are taken from both ears. Therefore, always take the temperature from the same ear.

## Memory Function

This thermometer stores the last 30 temperature readings:

- With the power on, press the Power/Memory button to recall the first reading.



- Press the Power/Memory button again to recall the next reading.
- Delete memory:**  
Press both power and measurement buttons at the same time and hold for 5 seconds. The signal "Clr" will display and the memory will be deleted.

## Replacing the Batteries

This thermometer is powered by 2 AAA batteries. When the power is low, the low battery signal is displayed. To replace the batteries:


- Press and push the battery cover to open it.
- Remove the old batteries and replace with new ones. Make sure the batteries are facing the correct direction.
- Close the battery cover.

**Note:** To protect the environment, dispose of used batteries at an appropriate collection site according to national or local regulations.

## Cleaning and Care

- Use a soft, dry cloth to clean the exterior of the thermometer.
- Keep the thermometer away from direct sunlight, dust and other environmental contamination.
- Store the thermometer at normal room temperature.

## Display Message

Display message	Situation	Solution
Er 1	ambient temperature is out of operating range (50°F-104°F)	Allow the thermometer remain in the room temperature (50°F-104°F) for 30 minutes
Er 2	Sensor error	Contact the dealer
Er 3	Memory error	Contact the dealer
H1	Temperature measured is higher than normal human range (above 108°F)	Check the measured object and take a new measure
Lo	Temperature measured is lower than normal human temperature range (below 93.2 °F)	Temperature measured is lower than normal human temperature
	Low battery	Replace batteries

## Product Specifications

Measurement method	Infrared measurement
Measurement range	93.2°F – 108°F
Accuracy	96.8 - 102.2°F = +/- .4°F 93.2 - 96.8°F, 102.2 - 108°F = +/- .6°F
Clinical repeatability	+/- .4°F
Measuring time	1 second
Display	LCD
Measurement Increment	.1°F
Memory	Stores last 30 readings
Auto shutoff	1 minute after not being used
Batteries	2 x 1.5V AAA batteries
Operating temperature	+50°F/+104°F
Storage Temperature	-20°F/+120°F
Dimensions	148 x 35 x 30mm
Weight	49g (excluding batteries)

## WARRANTY

### A Full 3-Year Warranty on Your Monitor

The SureLife® Ear Thermometer is warranted to be free from defects in materials and workmanship within 3 years from the date of purchase. The monitor must be used in accordance with the instructions provided.

### Keep Your Proof of Purchase (Store Invoice)

The above warranty is extended to only the original retail purchaser. Proof of Purchase required.

We will, at our option, repair or replace without charge the wrist monitor covered by the above warranty.

To obtain warranty service, please contact MHC Medical Products at (877) 358.4342.

ALL IMPLIED WARRANTIES, INCLUDING BUT NOT LIMITED TO THE IMPLIED WARRANTIES OF MERCHANTABILITY AND FITNESS FOR PARTICULAR PURPOSE, ARE LIMITED TO THE DURATION OF THE APPLICABLE WRITTEN WARRANTY ABOVE.

**FOR CUSTOMER  
SERVICE CALL OUR  
TOLL FREE NUMBER:**

**(877)358.4342**

**MHC Medical Products**

8695 Seward Road  
Fairfield, Ohio 45011

Made in China for MHC Medical Products, LLC.  
Package design © 2014

**SureLife®** is a trademark of MHC Medical Products.



JK-012015.3